

# what's on

JANUARY - APRIL 2012



EXHIBITIONS  
EVENTS  
TOURS  
EARLY YEARS  
FAMILIES  
YOUNG PEOPLE

# Five fabulous venues One great membership

Imagine Brighton & Hove without its greatest treasures: the Royal Pavilion & Museums? Impossible! They are so important to our city, our culture, our community and our future.

Become a member and help us to secure their future.

In return you'll receive great benefits

- \* **FREE entry to The Royal Pavilion & Preston Manor**
- \* **FREE entry to all paying museum exhibitions**
- \* **Invitations to private views**
- \* **Members' newsletter three times a year**
- \* **10% discount in the Royal Pavilion & Museums shops**
- \* **Exclusive members' events programme**
- \* **Special members' prices on events in *What's On***  
(see individual event listings for details)

For more information call Abigail  
on 03000 290907  
or visit [www.pavilionfoundation.org](http://www.pavilionfoundation.org)



The Royal Pavilion & Museums Foundation is a registered charity No 275242



Front cover image from *Charlotte, the Forgotten Princess* exhibition: Detail of *Princess Charlotte Augusta of Wales*, George Dawe, 1817 © National Portrait Gallery, London

## CONTENTS

**4 Exhibitions**

**8 Events**

**9 Tours**

**11 Early Years**

**12 Families**

**15 Young People**

**16 How to Book**

**17 Venue Information**

**18 Calendar**

**20 Highlights**

What's On

# Exhibitions

## Ragamala: Paintings from India

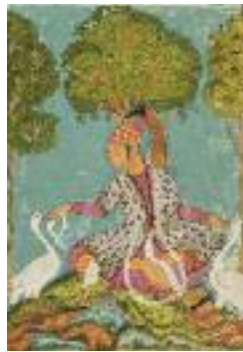
Continues to 8 January 2012

BRIGHTON MUSEUM & ART GALLERY

A collaboration with Dulwich Picture Gallery

Supported by Farrow & Ball

Free admission



Lalita Ragaputra of Bhairava Raga, Pahari, Chamba, c1690-1700, gouache on paper, 21.5 x 15.5cm, Private collection. Photo © Matthew Hollow Photography

See this exquisite collection of colourful Indian miniature paintings dating between 1605 and 1760, which encompass almost the whole of the Indian subcontinent.

Described as 'music-inspired paintings'; ragamalas were painted under royal patronage, and illustrate moods and feelings of love and devotion.

The exhibition is based on the private collection of Claudio Moscatelli, and is accompanied by paintings from Brighton Museum's own collection and artworks by the Brighton & Hove Young Carers Project.

FARROW & BALL  
Manufacturers of Traditional Papers and Paints

DULWICH PICTURE GALLERY

## Dress for Excess: Fashion in Regency England

Continues to 5 February 2012

(closed 23 January to 3 February)

ROYAL PAVILION

Supported by the Daphne Bullard Trust

Admission payable, members free

Explore the themes of 18th century dress, neoclassicism, military and industrial wear, presented through carefully selected, original 18th and 19th century costume displayed throughout the palace.

This exhibition celebrates the 200th anniversary of the Regency Act by looking at the life of George IV as prince, regent and king through fashions of the late Georgian period.

The exhibition includes the Prince Regent Gallery, which opened at the start of this year-long exhibition and displays items of clothing worn by George including his extravagant coronation robe, on loan from Madame Tussauds and not seen in public for 30 years.

See *Charlotte, the Forgotten Princess* exhibition details on page 6 for Royal Pavilion admission prices.



Hussar's military uniform, worn by Private Robert Smith at the Battle of Waterloo in 1815. On loan from Colchester and Ipswich Museum Service

## Robot Invasion!

Continues to 21 February 2012

HOVE MUSEUM & ART GALLERY

Free admission

Science fiction comes to life at Hove Museum in this galactic exhibition of robots and space toys! Vintage, collectable and popular items of all shapes and sizes from the collection of Sussex artist and illustrator Chris McEwan are on display.

The exhibition proudly displays these iconic objects providing inspiration and enjoyment for all ages. It celebrates our fascination with robots and the enduring impact they have on our imagination.

Plus come along to one of our family-friendly robot-themed events. See *Families* pages for details.



Photo Chris McEwan

## Dreams of Here

New work by Julian Bell, Tom Hammick and Andrzej Jackowski

18 February to 10 June 2012

(closed 23 to 27 April)

BRIGHTON MUSEUM & ART GALLERY

Free admission

Enjoy this beautiful exhibition of new work by three nationally recognised contemporary painters and printmakers, each with a strong connection to

Sussex. 'Here' ranges from Sussex landscapes to interior spaces, and from vibrant colours to echoing empty rooms. Bell, Hammick and Jackowski all paint and draw figurative images, each with his own distinctive style.

Julian Bell brings the eye of the old-fashioned realist painter to his contemporary surroundings, taking as his subject ordinary objects and everyday narratives – from a rubbish tip to a rock concert.

Accomplished colourist Tom Hammick creates brightly patterned paintings depicting modern-day life, reflecting on a lost rural simplicity or the clutter of the contemporary.

Andrzej Jackowski draws the spectator to dream-like shadowy interior spaces. He displays *The Voyage*, a one-off installation comprising 60 unframed drawings pinned to the walls.

Together the work of these artists takes the viewer on a journey of the imagination, from a place of literal description to the landscapes of subconscious worlds. See *Events* pages for gallery talks.



Andrzej Jackowski  
Drawing from *The Voyage* series, 2011  
Photo Leigh Simpson



## My Favourite Toy

10 March to 6 November 2012

HOVE MUSEUM & ART GALLERY

Free admission



Everyone has a favourite toy. They inspire our imaginations and our play, and help us as we grow. In later years, they hold cherished memories and make us nostalgic for times gone by. Whether

it's a teddy, dolls house or a transforming car, this exhibition celebrates toys of all kinds, from across the eras.

On display are toys from Hove Museum's very own Wizard's Attic along with some popular favourites, and others that have not been loved for some time.

Children and young people from Brighton & Hove have helped create exciting displays of their own favourite toys, celebrating our shared affection for these familiar friends.

## Charlotte, the Forgotten Princess

10 March 2012 to 10 March 2013

ROYAL PAVILION

THE PRINCE REGENT GALLERY

Admission payable, members free

An exhibition devoted to the short life and tragic death of Princess Charlotte Augusta of Wales. The only daughter of George, Prince of Wales (later George IV) and Princess Caroline of Brunswick, Charlotte was a feisty and headstrong child, who

became very popular with the public, in stark contrast to her father.

Charlotte married in 1816, but then tragically died the following year shortly after giving birth, aged only 21. Her sudden death sent shockwaves across the country and the public outpouring of grief was exceeded in English history only by that following the death of Diana, Princess of Wales.

Referred to by contemporaries as the 'Daughter of England', Charlotte would have become queen had she outlived her father and grandfather – and Queen Victoria would probably not have succeeded to the throne.

For the first time in a generation, the Royal Pavilion & Museums' extensive collection of paintings, ceramics and drawings relating to the princess is on display, alongside dresses belonging to Charlotte and loans from museums and private collections.



Style of George Clint (1770-1854)  
*The Betrothal of Princess Charlotte and Prince Leopold*, c1816

Exhibition is free with Royal Pavilion admission fee  
Adult £10, child (5-15 years) £5.70, concession £8  
B&H resident (with proof of address) £5

## Small displays at Brighton Museum

Free admission to all displays

### Peter Griffiths:

#### Footsteps on the Edge of Britain

Continues to 15 January

CAFE BALCONY

A selection of photographs by the late Peter Griffiths documenting his epic, solo, 6,500 mile walk around the British mainland coast.



Brighton Hippodrome  
programme 1947

### Reviewing our Collections

Continues to 1 February

BRIGHTON HISTORY CENTRE ENTRANCE

A selection of local historical objects from the museum's collections are

on display as part of a review process. Comment on how you think the collections should be used.

### Mel Stern: Painters and Poets

17 January to 26 February

CAFE BALCONY

Fleet Street photographer Mel Stern shows his portraits of some of Europe's prominent artists including his childhood hero, author and poet Robert Graves.

## 'It's Hey! for the Tartan'

### Scottish themes in British ceramics

Continues to 4 March

MR WILLETT'S POPULAR POTTERY

Scottish history, culture and personalities are celebrated in British ceramics from Culloden to Carlyle.



Robert Charles Goff  
*West Pier, Brighton*.  
Etching c1900

### Robert Goff: An Etcher in the Wake of Whistler

Continues to 29 April

PRINTS & DRAWINGS GALLERY

(closed 23 to 27 April)

A rare opportunity to see works by

the Hove-based etcher Robert Goff (1837-1922). 50 works, including etchings of Brighton and Sussex, are on display.

## Small displays at Hove Museum

Free admission to all displays

### The Five Senses: Paintings from the Fine Art Collection

Continues to 1 June 2012

FINE ART GALLERY

A family-friendly display exploring how sensory experiences are portrayed in the visual arts. Accompanied by interactive materials.

## Events

### The Victorian Séance

Fridays 3 February, 9 March, 13 April

PRESTON MANOR

8-9pm £12.50, members £10.50

In November 1896 a séance was held at Preston Manor. Séances became the ultimate fashionable Victorian after-dinner entertainment. This new event looks at what séances were and why they thrilled their audiences.



### Dreams of Here: Julian Bell gallery talk

Saturday 10 March

BRIGHTON MUSEUM

2-3pm Free

Artist and writer Julian Bell discusses the various senses of 'place' that go into his paintings seen in the *Dreams of Here* exhibition.



Julian Bell. *Exercises at Imber*, 2004. Oil on canvas

### Creative Future: Writers' Recital

Saturday 24 March

BRIGHTON MUSEUM

2-3pm Free

Listen to readings of poetry and prose inspired by the *Dreams of Here* exhibition, written by participants of a creative writing course led by local charity Creative Future.

### Charles Dickens, the Royal Pavilion and Brighton

Wednesday 28 March

ROYAL PAVILION

11.30am-12.30pm £10, members £8.50

Lecturer in 19th century literature Dr Peter Blake discusses the importance of the Royal Pavilion and Brighton to the life and work of Charles Dickens. Part of the 2012 bicentenary celebrations of Dickens's birth.



Teapot stand, c1849, showing a scene from Dickens's *Dombey and Son*

### Norman Hartnell, Dressmaker to the Queen

Thursday 5 April

BRIGHTON MUSEUM

11.30am-12.30pm Free

To celebrate the approaching Diamond Jubilee Martin Pel, Curator of Costume, shows a Norman Hartnell couture silk dress taken out of storage especially for this informative talk.



Louise Romer *Ellen Benett-Stanford with her son John*, 1875

### At Home with Lady Ellen

Saturday 7 April

PRESTON MANOR

10.30am-4.30pm Admission fees apply

Be welcomed to a traditional 'at home' by Edwardian owner Ellen Thomas-Stanford, her friends and household staff. Enjoy this charming day of special talks and activities to mark the 2012 season opening.

### Dreams of Here: Tom Hammick gallery talk

Saturday 14 April

BRIGHTON MUSEUM

2-3pm Free

Artist Tom Hammick discusses the themes and techniques in his new body of work in the *Dreams of Here* exhibition.



Tom Hammick  
*Dreams of Us*, 2011  
Oil on linen  
Photo Leigh Simpson

## Tours

### Hidden House:

#### Behind the Scenes at Preston Manor

Friday 27 January 11am-12.30pm

Wednesday 15 February 11am-12.30pm & 2-3.30pm

Thursdays 15 March, 12 April

11am-12.30pm & 2-3.30pm

PRESTON MANOR

£10.50, members £8.50, book in advance

Go behind the door marked 'private' and see parts of the house off the public route, including the 1905 extension. Plus, discover information from archived documents. Tea and biscuits included.



### Charles Dickens Bicentenary tour

Tuesday 7 February 11.30am-12.30pm

Saturday 18 February 2-3pm

ROYAL PAVILION

£5 plus admission fee

Charles Dickens was born 200 years ago on 7 February 1812. This guided tour explores both Dickens's passion for the Regency period, and the Royal Pavilion's transformation during his lifetime.

## Familiar Faces, Hidden Places

Saturdays 11 February, 24 March, 7 April

### MEET ROYAL PAVILION

11am-1pm followed by tea and cake, £20, members £15

Take a fascinating tour of the Royal Pavilion, Brighton Dome, Brighton Museum and Regency gardens, discovering what goes on behind the scenes in these iconic buildings. Find out about their hidden histories and how they became the cultural venues they are today.

## An Etcher in the Wake of Whistler: gallery tour

Sunday 12 February

### BRIGHTON MUSEUM

2.30-3.15pm Free

Guest curator Alexandra Loske introduces Hove-based artist Robert Goff's work and discusses his atmospheric etchings of Sussex, Italy, Egypt and Japan.



Postcard portrait of Princess Mary (later Queen Mary), c1908

Pavilion in the 20th century, including Queen Mary's enthusiasm and support for the building, and a generous royal loan from Windsor Castle.

## Diamond Jubilee celebration tours

Saturday 3,

Friday 30 March

### ROYAL PAVILION

11.30am-12.30pm

£5 plus admission fee

To celebrate the Diamond Jubilee year this tour reveals royal links with the Royal



*Apotheosis of HRH Princess Charlotte Augusta of Wales, 1818*

## Charlotte, the Forgotten Princess: gallery tour

Wednesday 14 March

### ROYAL PAVILION

11.30am-12.30pm, 2.30-3.30pm,

£4 plus admission fee

A special guided tour in the Prince Regent Gallery of the new, year-long exhibition on the tragic, short life of George IV's daughter Princess Charlotte Augusta of Wales.

## Mother's Day tours: Regency Elegance

Sunday 18 March

### ROYAL PAVILION

11.15am-12pm, 12.30-1.15pm, 2.15-3pm,

3.30-4.15pm Free with admission fee



Experience the splendour of the Royal Pavilion and learn all about Regency elegance on a tour conducted by a costumed guide from the Jane Austen era.

## Early Years

For how to book see page 16

Early Years sessions include art activities, a museum expedition, a story and handling some museum objects. These sessions are for 2-5 year olds only. Tickets are £4.50, members £3.50, book in advance.

### BRIGHTON MUSEUM

Tuesdays 10.30am-12pm

**Dinosaurs** 17 January

**Clay Day** 31 January

**Africa** 21 February

**Faces** 6 March

**Puppets** 20 March

**Printing** 17 April

### BOOTH MUSEUM

Fridays 10.30am-12pm

**Print it!** 20 January

**India** 3 February

**Rocks and Sands** 24 February

**Feathered Friends** 9 March

**2,4,6,8 Legs!** 23 March

**Dinosaurs** 20 April



## Picture and Story Time

### HOVE MUSEUM

Free, 2-5 years

Explore the galleries at Hove Museum, make a picture and listen to a story. Drop-in sessions every Monday and Thursday 10am-12pm from Monday 9 January to Monday 30 April 2012 inclusive (not during school holidays).

## Children's Festival Activities

Free, 2-8 years

As part of the 2012 Brighton Children's Festival celebrations, our museums are running free, fun activities. Drop in and have a look!

### HOVE MUSEUM

Monday 9, Tuesday 10 April

10am-12pm & 2-4pm

### BOOTH MUSEUM

Monday 9, Tuesday 10, Friday 13 April

10am-12pm & 2-4pm

### BRIGHTON MUSEUM

Tuesday 10 to Friday 13 April

10am-12pm & 2-4pm

## Families

### Haunted House Tours

Saturday 28 January

PRESTON MANOR

6.30-7.30pm, 8-9pm *Book in advance*  
Adult £8, members £6, child (6-15 years) £3  
*Suitable for adults, and children aged 6+*  
Join Preston Manor housemaids Daisy and Maisy on a light-hearted tour of Brighton's most haunted house. Have fun finding out about spooky happenings and ghostly goings-on!



### Spooky Storytelling

Saturday 11 February

PRESTON MANOR

7-8pm *Book in advance*  
Adult £6, members £4, child (6-15 years) £3  
*Suitable for adults, and children aged 6+*  
Do you dare to join our engaging storyteller for a series of freaky fables and terrifying tales at the spooktacular Preston Manor?

### Robot Animation Workshops

Saturdays 11, 18 February

HOVE MUSEUM

10.30am-12.30pm,  
1.30-3.30pm Free,  
8 years+

In groups, create your own robotic characters and backdrops. Bring them to life using our animation software and premiere your films in front of the group.



Photo Chris McEwan

### Robot Challenge!

Tuesday 14 February

HOVE MUSEUM

10.30am-12pm, 1-2.30pm, 3-4.30pm £2  
*Book in advance, 11-16 years*

In small groups, build and decorate light-seeking robots. Pit them against each other in a race around a giant maze. There can be only one winner in this robotic battle!

### Studio Day: Art in Mind

Tuesday 14 February

BRIGHTON MUSEUM

10.30am-12.30pm, 1.30-3.30pm Free  
*Drop-in, all ages*

Young people from local charity Art in Mind lead this workshop for families, inspired by the World Art collection. Use clay and multi-media to make an artwork that tells people more about you.

*A World Stories event*



### Dinosaur Disaster

Wednesday 15 February

BOOTH MUSEUM

10.30-11.30am, 12-1pm, 2-3pm Free  
*All ages*

In association with Brighton Science Festival, find out more about the world of dinosaurs at this child-friendly talk. Did a catastrophic event overcome the dinosaurs and lead to their extinction over 230 million years ago?

### Studio Day: Art of the Arctic

Thursday 16 February

BRIGHTON MUSEUM

10.30am-12.30pm, 1.30-3.30pm Free  
*Drop-in, all ages*

A workshop for families to explore objects from our Arctic collection. This event is run by young people from the Museum Collective (see page 15 for details).

*A World Stories event*



### Studio Days: Create your own Robot

Thursday 16, Friday 17 February

HOVE MUSEUM

10.30am-12.30pm, 1.30-3.30pm Free  
*Drop-in, all ages*

Create a robot from card and other craft materials, taking inspiration from the variety of shapes and colours of robots on display in the *Robot Invasion!* exhibition.



### Studio Day: Mother's Day cards

Saturday 17 March

BRIGHTON MUSEUM

10.30am-12.30pm, 1.30-3.30pm Free  
*Drop-in, all ages*

Work with our talented illustrator to explore drawing techniques and collage. Use your new skills to create beautiful hand-made Mother's Day cards.

## World Stories Animation Workshops

Thursday 5, Friday 6 April  
BRIGHTON MUSEUM



10.30am-12.30pm and 1.30-3.30pm, Free 8 years+

In groups, journey through Peru, the Arctic, Mali and Iran to create characters and backdrops reflecting the places in our new *World Stories* gallery (open June 2012). Bring your worlds to life using animation software and premiere your film in front of the group. A *World Stories* event



## Mega Beasts

Wednesday 11 April  
BOOTH MUSEUM  
10.30-11.30am, 12-1pm, 2-3pm &  
3.30-4.30pm £6, members £4  
Book in advance, all ages

Meet giant lizards, snakes and all manner of creepy-crawlies in this popular holiday activity. All children must be accompanied by a paying adult.

## Studio Days: My Favourite Toy Animation

Thursday 12, Friday 13 April  
HOVE MUSEUM  
10.30am-12.30pm, 1.30-3.30pm,  
Free 8 years+

Create an animation featuring your very own toys! In groups, build an imaginary world and fill it with your favourite bears, dolls or robots and watch the finished result with the group. Come with your favourite small toy from home (max height 15cm).

## Young People

### What does a Museum Curator do?

Friday 17 February  
BRIGHTON MUSEUM  
2-4pm Free, 16-21 years

Is this the job for you? Join the Curator of World Art to find out more about her job in this practical workshop. You will decide how to collect, categorise and curate your own miniature display, and the final results will be exhibited online. A *World Stories* event

### Streetfunk Dance Masterclass

Saturday 18 February  
THE OLD COURTROOM  
1-4pm Free, book in advance 14-24 years

Join this legendary local streetdance company to learn some new moves based on dance traditions from around the world. A *World Stories* event



### Perspex Jewellery Masterclass

Saturday 10 March  
BRIGHTON MUSEUM  
1-4pm Free, book in advance  
16-21 years

Saw, shape and transfer images onto Perspex to make your own piece of jewellery with artist Cath Laffan.



### Young Artists' Day

Saturday 28 April  
BRIGHTON MUSEUM  
11.30am-3.30pm Free, drop-in 14-24 years

To celebrate the city-wide Youth Arts Festival, local young artists lead a series of short drop-in workshops in an art form of their choice. If you are aged 16-21 and want to lead one of the workshops contact us on the details below.

ARE YOU AGED 16-21?

Interested in planning arts events and getting practical experience in museums and art galleries? Join the **Museum Collective!** For more information or to join email [museums.marketing@brighton-hove.gov.uk](mailto:museums.marketing@brighton-hove.gov.uk), text 07758 437 369 or call 01273 295861.

### World Stories: Young Voices

The World Art gallery at Brighton Museum & Art Gallery closes for redevelopment on 3 January 2012. An exciting new permanent gallery for young people – *World Stories: Young Voices* – opens in its place on 23 June 2012 as part of the London 2012 Festival.

## How to Book

You can buy tickets by telephoning the Events Booking line on **03000 290902**, in person at any of our venues, or online at [www.brighton-hove-rpml.org.uk](http://www.brighton-hove-rpml.org.uk)

Free events cannot be booked in advance unless otherwise stated.

A £1.50 booking fee may apply to some events. Tickets cannot be reserved without payment. Please book early as an event may be cancelled if too few tickets have been sold.

Visit our websites for further information  
[www.brighton-hove-museums.org.uk](http://www.brighton-hove-museums.org.uk)  
[www.brighton-hove-pavilion.org.uk](http://www.brighton-hove-pavilion.org.uk)

### Please note

Please note that a 'first come, first served' policy is in operation for drop-in sessions and free events that do not require pre-booking. Please arrive at the start time for all sessions, with the exception of drop-in events.

### Early Years and Family events

All children must be accompanied by their parent or guardian at these events and we ask that you assist your child with the activity. At the activities for children 8 years+, children will be under the supervision of a tutor.

### Brighton & Hove Residents

Postcodes BN1, BN2, BN3 & BN41 enjoy **half-price admission** to the Royal Pavilion all year and Preston Manor (April to September), with up to four



accompanying children free! Bring proof of residency, one item required per adult (eg council tax or other utility bill).

### Eat with us

Enjoy local Sussex dishes, traditional cream teas and special children's menus.

- The Royal Pavilion Tearoom
- Hove Museum Tearooms
- The Gallery Café at Brighton Museum

### Shop with us

The Royal Pavilion & Museums shops are open to everyone, and whenever you make a purchase you'll be helping us in our work conserving and restoring the buildings and their works of art. Members get 10% discount in our shops.

## Venue Information

### Brighton Museum & Art Gallery

Free admission  
Royal Pavilion Gardens, Brighton BN1 1EE  
Tel 03000 290900  
Open Tue-Sun 10am-5pm, Closed Mon (except Bank Holidays 10am-5pm)  
Closed 1 Jan and Mon 23 to Fri 27 April for essential maintenance. (World Art gallery closed for redevelopment 3 Jan to 22 Jun 2012)

♿ ♿ WC ♿ ♿ ♿ ♿ ♿ ♿ ♿

### Hove Museum & Art Gallery

Free admission  
19 New Church Road, Hove BN3 4AB  
Tel 03000 290900  
Open Mon, Tue, Thu, Fri & Sat 10am-5pm, Sun 2-5pm Closed Wed  
(Open on Bank Holiday Mondays)  
Closed 1 Jan

♿ ♿ WC ♿ ♿ ♿ ♿ ♿ ♿ ♿ 1, 1A, 6, 49, 49A

### Booth Museum of Natural History

Free admission  
194 Dyke Road, Brighton BN1 5AA  
Tel 03000 290900  
Open Mon, Tue, Wed, Fri & Sat 10am-5pm, Sun 2-5pm Closed Thu  
(Open on Bank Holiday Mondays)  
Closed 1 Jan

♿ ♿ WC ♿ ♿ ♿ ♿ ♿ ♿ ♿ 14, 14C, 27, 77

### The Old Courtroom

118 Church Street (side entrance)  
Brighton BN1 1UD  
Open for events  
Tel 03000 290902

♿ ♿ WC ♿ ♿

### The Royal Pavilion

Admission fee payable  
Brighton BN1 1EE  
Tel 03000 290900  
Open daily Apr-Sep 9.30am-5.45pm (last admission 5pm) Oct-Mar 10am-5.15pm (last admission 4.30pm) Closed 23 Jan to 3 Feb for essential maintenance

♿ ♿ WC ♿ ♿ ♿ ♿ ♿ ♿ ♿

### Preston Manor

Admission fee payable  
Preston Drove, Brighton BN1 6SD  
Tel 03000 290900  
Open Apr-Sep Tue-Sat 10am-5pm, Sun 2-5pm Closed Mon (including Bank Holidays) Closed Oct-Mar except for pre-booked groups, school visits and special events

♿ ♿ WC ♿ ♿ ♿ ♿ ♿ ♿ ♿ Preston Park station 5 min 5, 5A

### Brighton History Centre

Free admission  
Brighton History Centre, on the upper floor of Brighton Museum, offers a place to study local and family history and the museum collections. Enquire here about our image reproduction and research services.  
Open Tue-Sat 10am-5pm (closed Sun and Mon) Tel 01273 296971/296972  
[localhistory@brighton-hove.gov.uk](mailto:localhistory@brighton-hove.gov.uk)

♿ ♿ WC ♿ ♿ ♿ ♿ ♿ ♿ ♿

# Calendar

## EXHIBITIONS

**Continues to 8 Jan 2012**  
**Ragamala: Paintings from India**  
BRIGHTON MUSEUM

**Continues to 5 Feb 2012**  
**Dress for Excess: Fashion in Regency England**  
(closed 23 Jan to 3 Feb)  
ROYAL PAVILION

**Continues to 21 Feb 2012**  
**Robot Invasion!**  
HOVE MUSEUM

**18 Feb to 10 Jun 2012**  
**Dreams of Here**  
BRIGHTON MUSEUM

**10 Mar to 6 Nov 2012**  
**My Favourite Toy**  
HOVE MUSEUM

**10 Mar 2012 to 10 Mar 2013**  
**Charlotte, the Forgotten Princess**  
ROYAL PAVILION

SMALL DISPLAYS AT  
BRIGHTON MUSEUM

**Continues to 15 Jan**  
**Peter Griffiths: Footsteps on the Edge of Britain**

**Continues to 1 Feb**  
**Reviewing our Collections**

**17 Jan to 26 Feb**  
**Mel Stern: Painters and Poets**

**Continues to 4 Mar**  
**'It's Hey! for the Tartan' Scottish themes in British ceramics**

**Continues to 29 Apr**  
**Robert Goff: An Etcher in the Wake of Whistler**

SMALL DISPLAYS AT  
HOVE MUSEUM

**Continues to 1 Jun 2012**  
**The Five Senses: Paintings from the Fine Art Collection**  
HOVE MUSEUM

## EVENTS & TOURS

**9 Jan to 30 Apr**  
(Mon and Thu only)  
**Picture and Story Time**  
HOVE MUSEUM

**17 Jan**  
**Dinosaurs**  
BRIGHTON MUSEUM

**20 Jan**  
**Print it!**  
BOOTH MUSEUM

**27 Jan**  
**Hidden House: Behind the Scenes at Preston Manor**  
PRESTON MANOR

**28 Jan**  
**Haunted House Tours**  
PRESTON MANOR

**31 Jan**  
**Clay Day**  
BRIGHTON MUSEUM

**3 Feb**  
**India**  
BOOTH MUSEUM

**3 Feb**  
**The Victorian Séance**  
PRESTON MANOR

**7 Feb**  
**Charles Dickens Bicentenary tour**  
ROYAL PAVILION

**11 Feb**  
**Robot Animation Workshops**  
HOVE MUSEUM

**11 Feb**  
**Familiar Faces, Hidden Places**  
MEET ROYAL PAVILION

**11 Feb**  
**Spooky Storytelling**  
PRESTON MANOR

**12 Feb**  
**An Etcher in the Wake of Whistler: gallery tour**  
BRIGHTON MUSEUM

**14 Feb**  
**Robot Challenge!**  
HOVE MUSEUM

**14 Feb**  
**Studio Day: Art in Mind**  
BRIGHTON MUSEUM

**15 Feb**  
**Dinosaur Disaster**  
BOOTH MUSEUM

**15 Feb**  
**Hidden House: Behind the Scenes at Preston Manor**  
PRESTON MANOR

**16 Feb**  
**Studio Day: Art of the Arctic**  
BRIGHTON MUSEUM

**16 Feb**  
**Studio Days: Create your own Robot**  
HOVE MUSEUM

**17 Feb**  
**Studio Days: Create your own Robot**  
HOVE MUSEUM

**17 Feb**  
**What does a Museum Curator do?**  
BRIGHTON MUSEUM

**18 Feb**  
**Robot Animation Workshops**  
HOVE MUSEUM

**18 Feb**  
**Charles Dickens Bicentenary tour**  
ROYAL PAVILION

**18 Feb**  
**Streetfunk Dance Masterclass**  
THE OLD COURTROOM

**21 Feb**  
**Africa**  
BRIGHTON MUSEUM

**24 Feb**  
**Rocks and Sands**  
BOOTH MUSEUM

**3 Mar**  
**Diamond Jubilee celebration tours**  
ROYAL PAVILION

**6 Mar**  
**Faces**  
BRIGHTON MUSEUM

**9 Mar**  
**Feathered Friends**  
BOOTH MUSEUM

**9 Mar**  
**The Victorian Séance**  
PRESTON MANOR

**10 Mar**  
**Perspex Jewellery Masterclass**  
BRIGHTON MUSEUM

**10 Mar**  
**Dreams of Here: Julian Bell gallery talk**  
BRIGHTON MUSEUM

**14 Mar**  
**Charlotte, the Forgotten Princess: gallery tour**  
ROYAL PAVILION

**15 Mar**  
**Hidden House: Behind the Scenes at Preston Manor**  
PRESTON MANOR

**17 Mar**  
**Studio Day: Mother's Day cards**  
BRIGHTON MUSEUM

**18 Mar**  
**Mother's Day tours: Regency Elegance**  
ROYAL PAVILION

**20 Mar**  
**Puppets**  
BRIGHTON MUSEUM

**23 Mar**  
**2,4,6,8 Legs!**  
BOOTH MUSEUM

**24 Mar**  
**Familiar Faces, Hidden Places**  
MEET ROYAL PAVILION

**24 Mar**  
**Creative Future: Writers' Recital**  
BRIGHTON MUSEUM

**28 Mar**  
**Charles Dickens, the Royal Pavilion and Brighton**  
ROYAL PAVILION

**30 Mar**  
**Diamond Jubilee celebration tours**  
ROYAL PAVILION

**5 Apr**  
**World Stories Animation Workshops**  
BRIGHTON MUSEUM

**5 Apr**  
**Norman Hartnell, Dressmaker to the Queen**  
BRIGHTON MUSEUM

**6 Apr**  
**World Stories Animation Workshops**  
BRIGHTON MUSEUM

**7 Apr**  
**At Home with Lady Ellen**  
PRESTON MANOR

**7 Apr**  
**Familiar Faces, Hidden Places**  
MEET ROYAL PAVILION

**9 Apr**  
**Children's Festival Activities**  
HOVE MUSEUM

**9 Apr**  
**Children's Festival Activities**  
BOOTH MUSEUM

**10 Apr**  
**Children's Festival Activities**  
HOVE MUSEUM

**10 Apr**  
**Children's Festival Activities**  
BOOTH MUSEUM

**10 Apr**  
**Children's Festival Activities**  
BRIGHTON MUSEUM

**11 Apr**  
**Children's Festival Activities**  
BRIGHTON MUSEUM

**11 Apr**  
**Mega Beasts**  
BOOTH MUSEUM

**12 Apr**  
**Studio Days: My Favourite Toy Animation**  
HOVE MUSEUM

**12 Apr**  
**Hidden House: Behind the Scenes at Preston Manor**  
PRESTON MANOR

**12 Apr**  
**Children's Festival Activities**  
BRIGHTON MUSEUM

**13 Apr**  
**Children's Festival Activities**  
BRIGHTON MUSEUM

**13 Apr**  
**Children's Festival Activities**  
BOOTH MUSEUM

**13 Apr**  
**Studio Days: My Favourite Toy Animation**  
HOVE MUSEUM

**13 Apr**  
**The Victorian Séance**  
PRESTON MANOR

**14 Apr**  
**Dreams of Here: Tom Hammick gallery talk**  
BRIGHTON MUSEUM

**17 Apr**  
**Printing**  
BRIGHTON MUSEUM

**20 Apr**  
**Dinosaurs**  
BOOTH MUSEUM

**28 Apr**  
**Young Artists' Day**  
BRIGHTON MUSEUM

## Charlotte, the Forgotten Princess

### ROYAL PAVILION

A new year-long exhibition on the tragic and short life of George IV's only child. *See page 6 for details*

## Familiar Faces, Hidden Places

### ROYAL PAVILION

A look at what goes on behind the scenes of the Royal Pavilion, Brighton Dome, Brighton Museum and Regency gardens. *See page 10 for details*

## Download our app!

Keep-up-to-date with events,  
exhibitions and offers – free



iphone  
<http://bit.ly/opgyLn>



Android  
<http://bit.ly/nsNf7H>



*follow us online*

[www.brighton-hove-rpml.org.uk](http://www.brighton-hove-rpml.org.uk)  
03000 290900